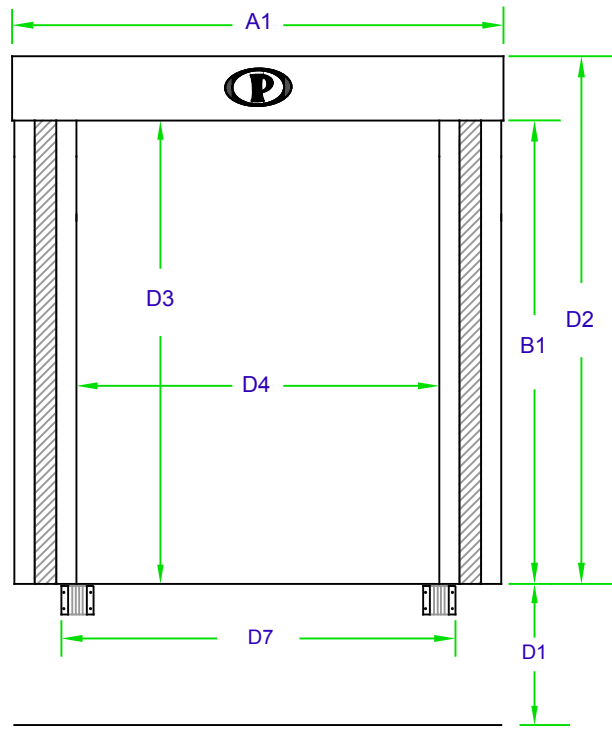
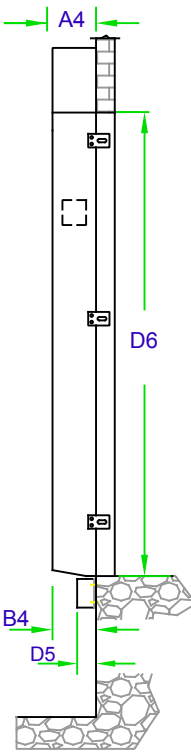


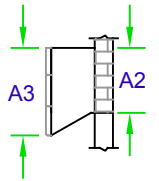
# WEATHER SHIELD DOCK SEAL: FOAM HEADER WITH OPTIONAL DROP FLAP



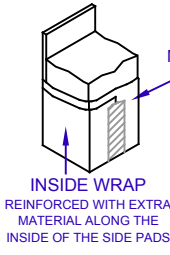
### SQUARE HEAD PAD



### WEDGED HEAD PAD

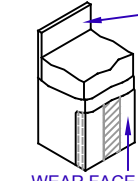


### BASE MATERIAL



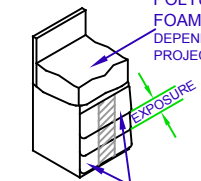
INSIDE WRAP REINFORCED WITH EXTRA MATERIAL ALONG THE INSIDE OF THE SIDE PADS

### WOOD OR STEEL BACK BOARD

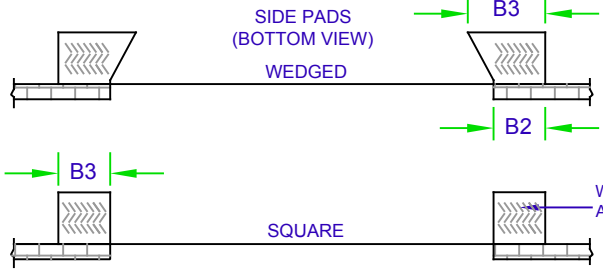
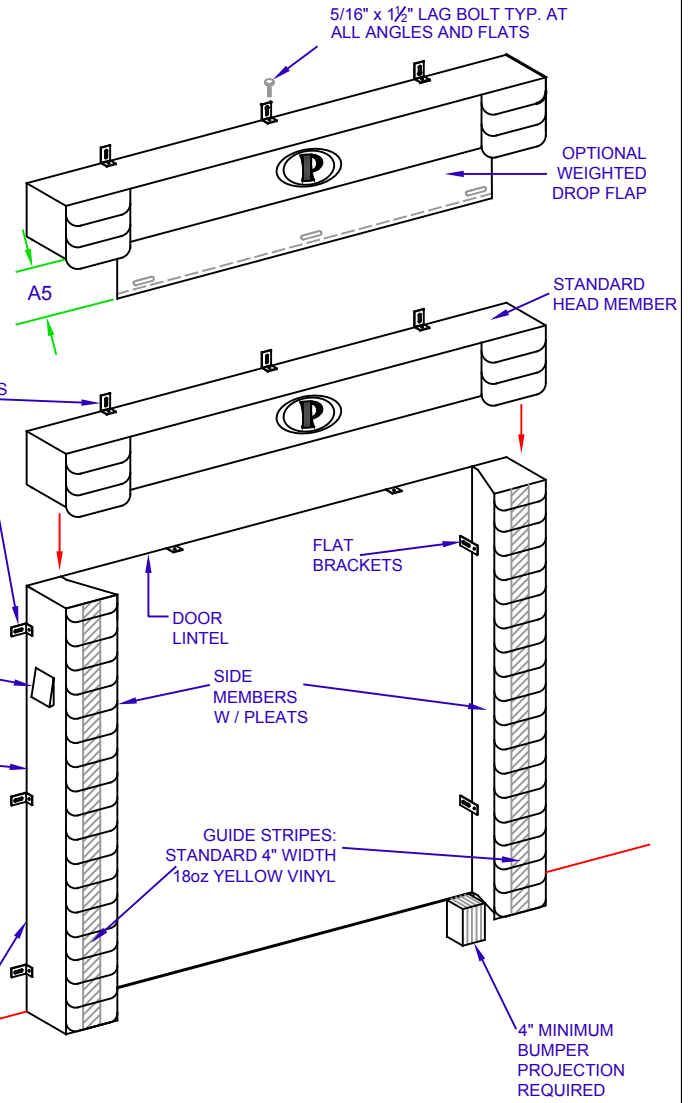


WEAR FACE REINFORCED WITH EXTRA MATERIAL ON THE FRONT FACE OF THE SIDE PADS

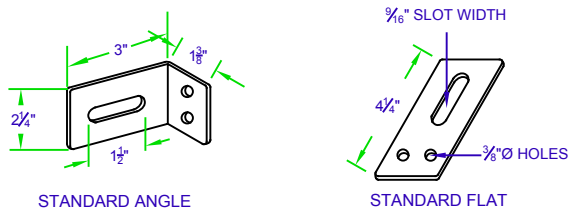
### POLYURETHANE FOAM- DENSITY DEPENDENT ON PROJECTION



PERMA PLEATS  
4" EXPOSURE  
8" EXPOSURE  
16" EXPOSURE



### GALVANIZED MOUNTING BRACKETS



DIMS.		HEAD PAD DATA:	
A1-	" LENGTH	BACK BOARD- W:	<input type="checkbox"/> S: <input type="checkbox"/>
A2-	" HEIGHT AT REAR	MATERIAL-	
A3-	" HEIGHT AT FACE	DROP FLAP:	<input type="checkbox"/>
A4-	" PROJ. AT TOP	PERMA PLEATS:	<input type="checkbox"/>
A5-	" DROP FLAP	EXPOSURE-	"
DIMS.		SIDE PAD DATA:	
B1-	" LENGTH	BACK BOARD- W:	<input type="checkbox"/> S: <input type="checkbox"/>
B2-	" WIDTH AT REAR	MATERIAL-	
B3-	" WIDTH AT FACE	WEAR FACE:	<input type="checkbox"/>
B4-	" PROJ. AT BOTTOM	INSIDE WRAP:	<input type="checkbox"/>
B5-	" PROJ. AT TOP	PERMA PLEATS:	<input type="checkbox"/>
		EXPOSURE-	"

GENERAL INFO:	
APPROACH- DECLINE:	<input type="checkbox"/> INCLINE: <input type="checkbox"/> LEVEL: <input type="checkbox"/>
D1-	" DOCK HEIGHT FROM GROUND
D2-	" ENTIRE UNIT HEIGHT
D3-	" INSIDE OPENING HEIGHT
D4-	" INSIDE OPENING WIDTH
D5-	" BUMPER PROJ.
D6-	" DOOR HEIGHT
D7-	" DOOR WIDTH

**PERMA TECH, INC.**  
 363 HAMBURG STREET • BUFFALO, NY 14204  
 (716) 854-0707 • 1-800-DOC-SEAL  
[www.permatechinc.com](http://www.permatechinc.com)

JOB: \_\_\_\_\_

DEALER: \_\_\_\_\_ DATE: \_\_\_\_\_

CONTACT: \_\_\_\_\_ QUOTE #: \_\_\_\_\_

APPROVED BY SIGNATURE: \_\_\_\_\_

SPECIAL INFORMATION: