

Perma Tech Inc.

PT-2200
FULLY-GASKETED

Retail • Industrial • Commercial
Heavy Cart to Light Motorized Traffic



PT - 2200

**VERSATILE DOOR FOR HEAVY CART
AND MOTORIZED TRAFFIC**

- **BUILT FOR HIGH VISIBILITY**
- **FLEXIBLE DOOR**
- **TOP MOUNTED HINGES**

Perma Tech, Inc. doors are available in single or double panel.



FEATURES:

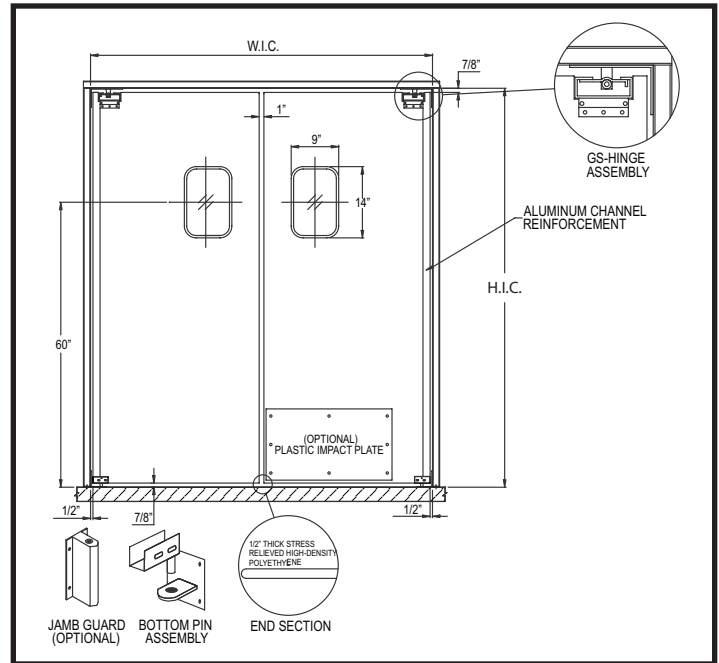
- Doors are constructed with a base layer of clear flexible .160" thick PVC.
- Bottom 48" has flexible textured PVC abuse plates.
- Doors have top and bottom wipers, bulb gaskets at the sides and a wrapped center edge.
- Hinges are vinyl top mounted gravity actuated stainless steel.
- Available in Black, Beige, White and Light Gray. *Consult factory for other color options.*
- Doors is manufactured to fit up to an 8' x 8' bi-parting or a 4' x 8' single panel opening.

Perma Tech Inc.

363 Hamburg Street • Buffalo, NY 14204
Phone: 716.854.0707 • Fax: 716.854.0774
Sales@PermaTechInc.com • www.PermaTechInc.com

ARCHITECTURAL SPECIFICATIONS

Doors are double acting traffic doors. The PT-7000 is manufactured by Perma Tech, Inc. Doors are constructed of 1/2" thick stress relieved polyethylene. Hinge edges are reinforced with a custom 3/16" thick x 1 1/4" deep aluminum extrusion. Doors come with standard 9" x 14" acrylic vision panel and hinge with hardened CAM plate and rollers, dust covers and bottom pin assembly.



To fit door opening size:

_____ width x _____ height

- SINGLE BI-PARTING
- Left Right

OPTIONS:

Abuse plates, jamb guards, scuff plates, rub rails and cart guards are available as upgrades.

ABS IMPACT PLATES *Both sides -Black Std.*

- PL12 (12") PL24 (24")
- PL30 (30") PL36 (36")
- PL42 (42") PL48 (48")

STAINLESS STEEL IMPACT PLATE

- SS12 (12") SS24 (24")
- SS30 (30") SS36 (36")
- SS42 (42") SS48 (48")

WINDOW SIZES

- 6" x 12"
- 22" x 22"
- 9" x 14"
- 10" x 30"
- 14" x 16"

HINGE - JAMB GUARD OPTIONS

- BOTTOM PIN** *standard*
- JG-10 (10")**
- STAINLESS STEEL GS TYPE HINGE WITH 10" JAMB GUARDS** *for full height doors only*
- CAFE/GATE HINGE**
- RUB RAILS/CART GUARDS**



PT-2200 Traffic Doors are shipped FOB Factory.

Customer: _____
 Approved By: _____ Date: _____

Perma Tech Inc. • 363 Hamburg Street • Buffalo, NY 14204
 Sales@PermaTechInc.com • www.PermaTechInc.com