

AIR SEAL OPERATION INSTRUCTIONS:

1. VEHICLE IS AT THE DOCK AND IS STATIONARY.
UNDO THE "TIE-BACK" STRAPS FROM SIDE MEMBERS.

2. INFLATE AIR SEAL TO ENGAGE VEHICLE.

3. WHEN DOCK OPERATIONS ARE COMPLETE, DEFLATE AIR SEAL.

4. MAKE SURE AIR SEAL MATERIAL IS COMPLETELY FREE FROM VEHICLE BEFORE ALLOWING VEHICLE TO MOVE AWAY FROM DOCK. NEVER ALLOW VEHICLES TO MOVE WHILE SEAL IS INFLATED.

5. RESTORE THE "TIE-BACK" STRAPS AROUND THE SIDE MEMBERS AND HOOK TO EYEBOLT.

LIMITED PRODUCT WARRANTY

Perma Tech, Inc. warrants the material and workmanship in any product manufactured by Perma Tech, Inc. for a period of one year from the date of shipment to customer if properly installed, maintained and used. This limited warranty shall not apply in the event of misuse or modification by customer or to materials not manufactured and installed by Perma Tech, Inc.

In the event of any defects covered by this warranty, Perma Tech, Inc. will remedy such defects by repairing or replacing at its expense any defective products or, at its option, refunding the original purchase price excluding installation, freight and tax. This shall be customer's exclusive remedy for all claims whether based on warranty, contract, negligence, strict liability or other legal theory.

Written notice of any claim must be made within the warranty period by first class mail or personal delivery to a suitable person at Perma Tech's office at 363 Hamburg Street, Buffalo, New York 14204. Notice of delivery by e-mail or fax is not acceptable.

PERMA TECH, INC. EXPRESSLY DISCLAIMS AND CUSTOMER WAIVES ALL IMPLIED WARRANTIES INCLUDING WITHOUT LIMITATION, ANY IMPLIED WARRANTIES OF MERCHANTABILITY OR FITNESS FOR A PARTICULAR PURPOSE. PERMA TECH, INC. SHALL NOT IN ANY EVENT BE LIABLE FOR AND CUSTOMER WAIVES ANY INCIDENTAL, CONSEQUENTIAL OR PUNITIVE DAMAGES OF ANY KIND TO CUSTOMER OR ANY THIRD PARTY, INCLUDING WITHOUT LIMITATION DAMAGES FOR LOST PROFITS, EVEN IF ADVISED OF SAME.



PERMA TECH, INC.

363 HAMBURG STREET
BUFFALO, NEW YORK 14204

PHONE: (716) 854-0707

FAX: (716) 854-0774

1-800-362-7325

WWW.PERMATECHINC.COM

PERMA INFLATABLE AIR SEAL

MODEL 3300

INSTALLATION INSTRUCTIONS

NOTE:

CHECK SHIPPING CONTAINERS BEFORE RELEASING CARRIER.
NOTIFY CARRIER IMMEDIATELY UPON DISCOVERING ANY CONCEALED DAMAGE.

WARNING

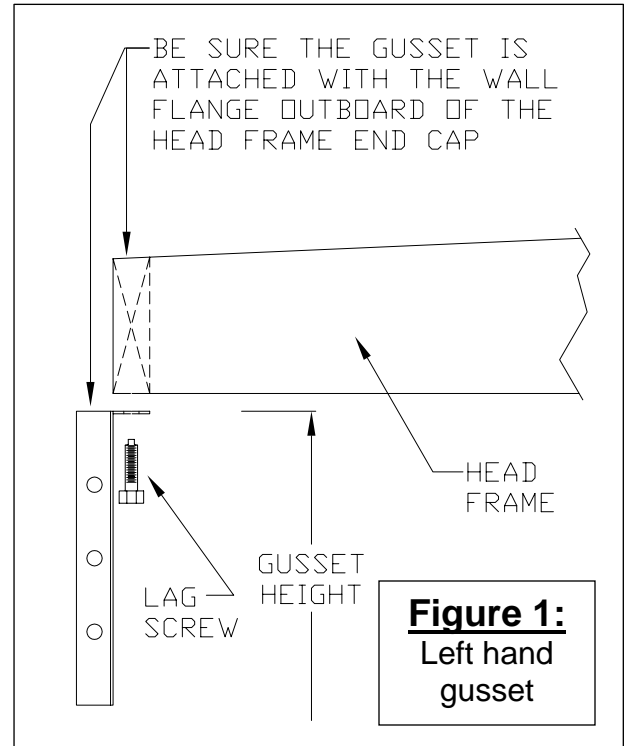
DO NOT INSTALL THIS PRODUCT UNLESS YOU READ AND UNDERSTAND THE WARNINGS AND INSTALLATION INSTRUCTIONS CONTAINED IN THIS MANUAL.
FAILURE TO DO SO COULD RESULT IN SERIOUS INJURY OR DEATH.

INSTALLATION INSTRUCTIONS

PERMA AIR SEAL - MODEL 3300

NOTE: Check all shipping containers before releasing carrier. Notify carrier immediately upon discovering any concealed damage.

1. Mark the centerline of the door opening at the top of the door (lintel) and mark the centerline of the unit.
2. Find the side member length by measuring the length of the provided 2 x 6's. Add 1/8" to this measurement for clearance of the gussets and then mark the building wall for this height from the dock floor.
3. Mount the blower inside at the top of the head frame with 1 1/2" x 5/16" lag bolts. See Dayton blower installation packet for specifications. Blower requires 110/230 volts.
4. Attach the gussets to the ends of the head frame with provided lag screws (see figures 1 & 2). Mount the head frame centered on the door with the **bottom** of the head frame on the height mark made in step 2.

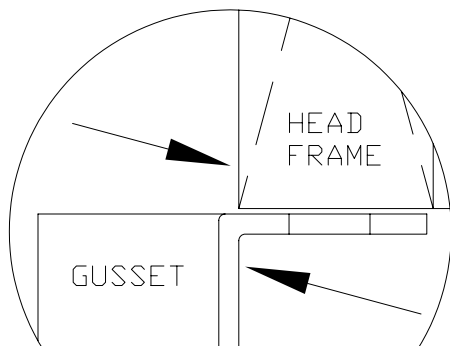


5. Using appropriate anchor bolts (not included), attach the 2 x 6's to the wall with the edges of the 2 x 6 as close to the inside of the gussets as possible.
6. Attach the side members to the wooden 2 x 6's using roofing nails. Use about one nail every 12 inches.
7. When installation is completed, caulk the top and the sides of the unit where it meets the building.

NOTE: To adjust the torsion bar, place a wrench on the adjusting nut and while holding the torsion bar through the head bag, turn the nut to relieve the tension on the retaining brackets. Turn counterclockwise to loosen, (to tighten, turn clockwise), not more than 5 turns at a time. Once adjusted, slide torsion bar back into place and allow tension to lock unit into place. Repeat if necessary.

Figure 2:

Be sure to align the outside edge of head frame and the inside edge of the gusset when attaching.



WARNING:

DON'T LET GO OF THE TORSION BAR ONCE IT'S FREE OF THE RETAINING BRACKETS OR THE BAR WILL LOSE ALL OF ITS TENSION AND THE HEAD BAG WILL DROP. USE EXTREME CAUTION WHEN ADJUSTING TORSION.

