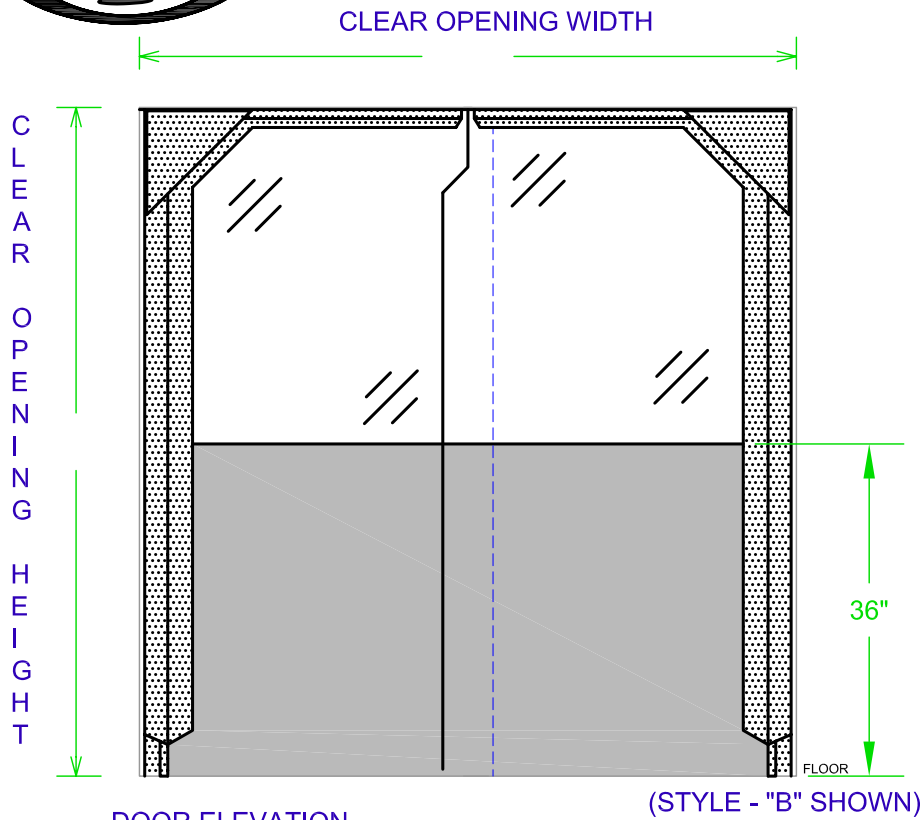


PERMA KLEERTM

TRAFFIC DOOR



DOOR ELEVATION

(STYLE - "B" SHOWN)

STANDARD FEATURES:

- 180° SWING, SPRING LOADED, ADJUSTABLE TENSION CLOSER
- FLEXIBLE 10 mm THICK PVC MATERIAL
- 12 ga. FORMED STEEL FRAME
- GRAY PRIMER FINISH

SPECIFICATIONS: NUMBER OF PAIRS: _____ . COLOR: _____ .

DOOR SIZE: WIDTH _____ , HEIGHT: _____ .

OPTIONS:

STYLE "A" - ALL CLEAR PANELS

OPTIONS: STYLE "A" ONLY

- FLEXIBLE LO-TEMP U.S.D.A. APPROVED 10 mm THICK, CLEAR PVC MATERIAL
- 12 ga. FORMED STEEL FRAME
- ALUMINUM FRAME
- U.S.D.A. APPROVED FLAT BLACK POWDER COATING FINISH
- ALUMINUM FINISH

STYLE "B" - 48" HIGH BONDED OPAQUE WEAR PANELS

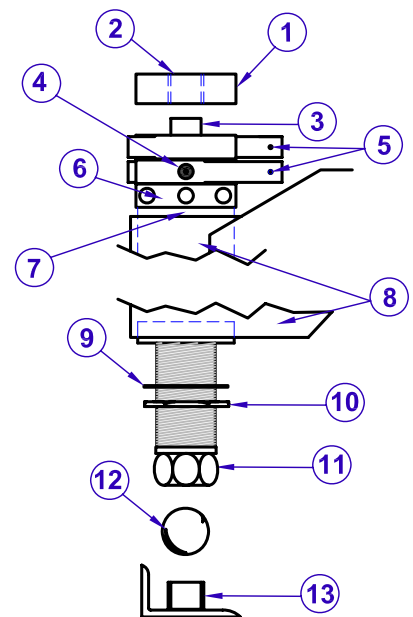
STYLE "C" - 36" HIGH FULL WIDTH VISION PANEL IN OPAQUE DOOR PANELS

WEAR PADS: HEIGHT: _____ .

MASONRY BOTTOM LOWER PIVOT

F.D.A. - U.S.D.A. APPLICATIONS

MOUNTING HARDWARE



NO.	DESCRIPTION
1	UPPER DOOR PIVOT
2	NYLON BUSHING
3	GUIDE PIN
4	TENSION PIN
5	STOP ADJUSTMENT SCREW
6	TENSION BUSHING
7	DOOR CLOSURE BODY
8	HOUSING
9	LOCKWASHER
10	HEX NUT
11	BEARING SCREW
12	BALL BEARING
13	LOWER DOOR PIVOT

NOTE: DOOR WIDTHS 10' 0" AND OVER HAVE EXTRA HEAVY DUTY CLOSURES



PERMA TECH, INC.

363 HAMBURG STREET • BUFFALO, NY 14204
 (716) 854-0707 • 1-800-DOC-SEAL • (716) 854-0774 FAX
www.permatechinc.com

CUSTOMER: _____

DEALER: _____

QUOTE #: _____

APPROVED BY SIGNATURE: _____