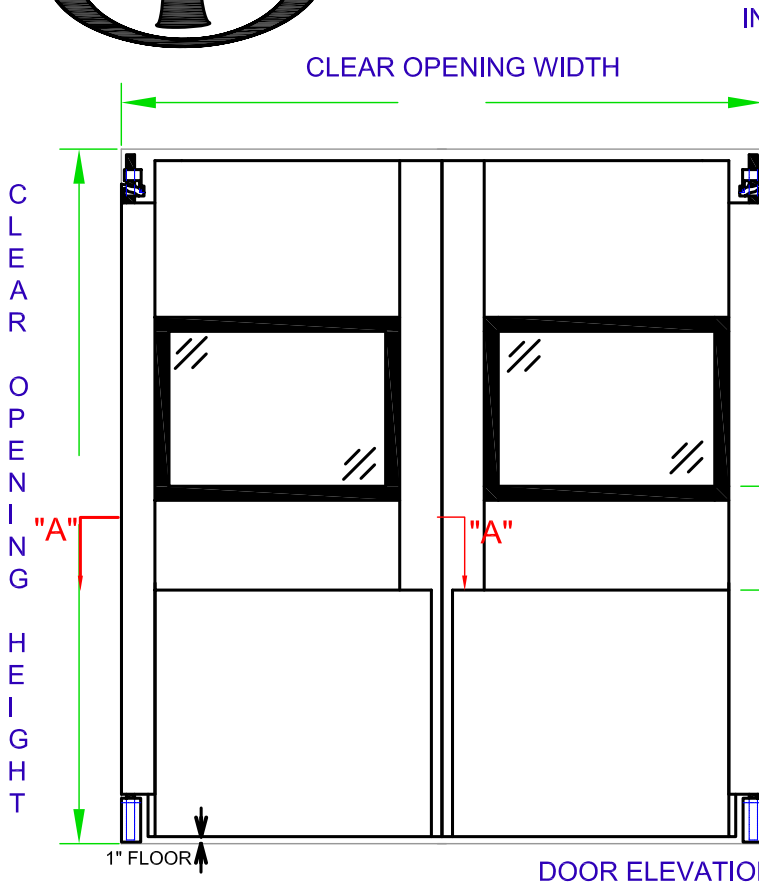
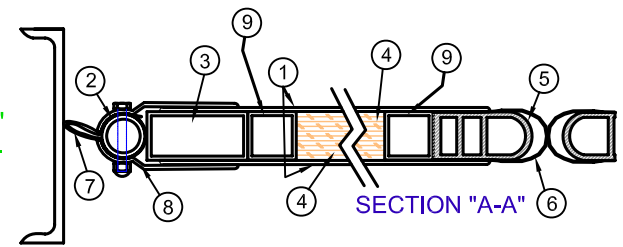
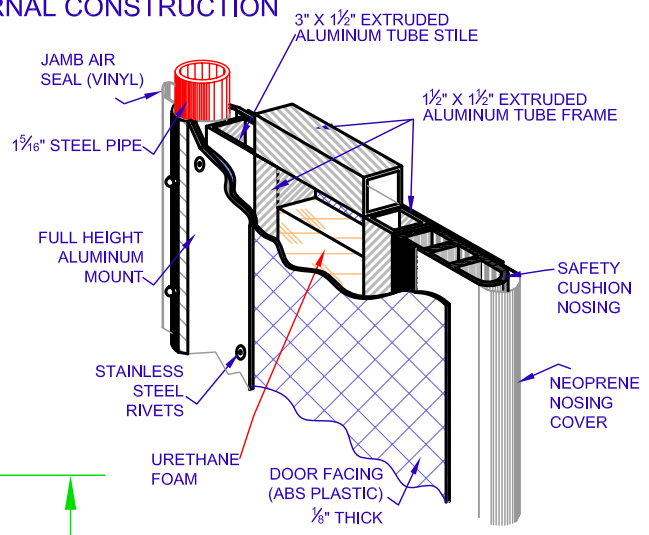


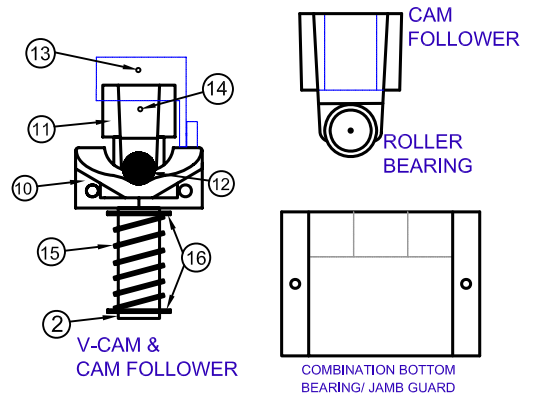
PERMA SHIELDTM TRAFFIC DOOR



INTERNAL CONSTRUCTION



MOUNTING HARDWARE



STANDARD FEATURES:

- 180° SWING, 1 1/2" RISE V-CAM GRAVITY HARDWARE
- FULL HEIGHT MOUNT ASSEMBLY
- FULL PERIMETER AIR SEALS, INCLUDING HEADER, BOTTOM MOUNTED AND JAMB SEAL,
- SAFETY CUSHION NOSING WITH LOOP SEAL AT CENTER, TOP AND BOTTOM BLADE SEALS AT HARDWARE CUTOUTS, TOP ABS PLASTIC CAM SHIELD WITH SKIRT SEAL.
- COMBINATION BOTTOM BEARING/JAMB GUARD.
- 36" HIGH RUBBER BUMPERS
- RIGID, FULL 1 3/4" THICK
- INSULATED CORE
- ABS PLASTIC FACING
- VISION PANELS - FLUSH MOUNTED, 1/8" THICK, POLYCARBONATE, DOUBLE GLAZED 22" HIGH x FULL WIDTH

SPECIFICATIONS: NUMBER OF PAIRS: _____ COLOR: _____
 DOOR SIZE: WIDTH _____, HEIGHT: _____

OPTIONS:

- BUMPERS _____, HEIGHT: _____
- IMPACT PANELS: PAD WRAP AROUND
 COLOR: _____, HEIGHT: _____
- BOTTOM AIR SEAL
- FULL AIR SEAL PACKAGE
- BLADE SEALS: TOP BOTTOM
- RIGID CAM SHIELDS
- 3/4" CAM RISE
- WELD PLATES
- HOLD OPEN DEVICE
- FIXED COMPRESSION SPRING (FOR WIND & AIR LOADS)
- ADJUSTABLE SPRING COMPENSATOR (FOR WIND & AIR LOADS)
 WITH ALUMINUM BOTTOM BEARING & 1 1/8" JAMB GUARD MOUNTED UNDER V-CAM

NO.	DESCRIPTION
1	DOOR FACING - ABS PLASTIC - 1/8" THICK
2	1 1/8" STEEL TUBE
3	3" x 1 1/2" EXTRUDED ALUMINUM TUBE STILE
4	URETHANE FOAM
5	SAFETY CUSHION NOSING
6	LOOP NOSING
7	JAMB AIR SEAL
8	FULL HEIGHT ALUMINUM MOUNT
9	1 1/2" x 1 1/2" EXTRUDED ALUMINUM TUBE FRAME
10	V-CAM - 1 1/2" STANDARD
11	CAM FOLLOWER
12	ROLLER BEARING
13	ROLL PIN
14	SET SCREW
15	COMPRESSION SPRING (OPTIONAL)
16	FLAT WASHERS (OPTIONAL)



PERMA TECH, INC.

363 HAMBURG STREET • BUFFALO, NY 14204
 (716) 854-0707 • 1-800-DOC-SEAL • (716) 854-0774 FAX
www.permatechinc.com

CUSTOMER: _____

DEALER: _____ QUOTE #: _____

APPROVED BY SIGNATURE: _____