

WHEEL CHOCK SAFETY SYSTEM

PREVENT CATASTROPHIC ACCIDENTS!

Avoid trailer creep and premature departure with wheel chock safety systems.

- Simple design & operation
- Wheel Chocks meet OSHA Regulation 1910.178 (k)
- Available in a complete safety system with chain, wall bracket and caution sign
- For the best protection, use (2) wheel chocks per loading dock position

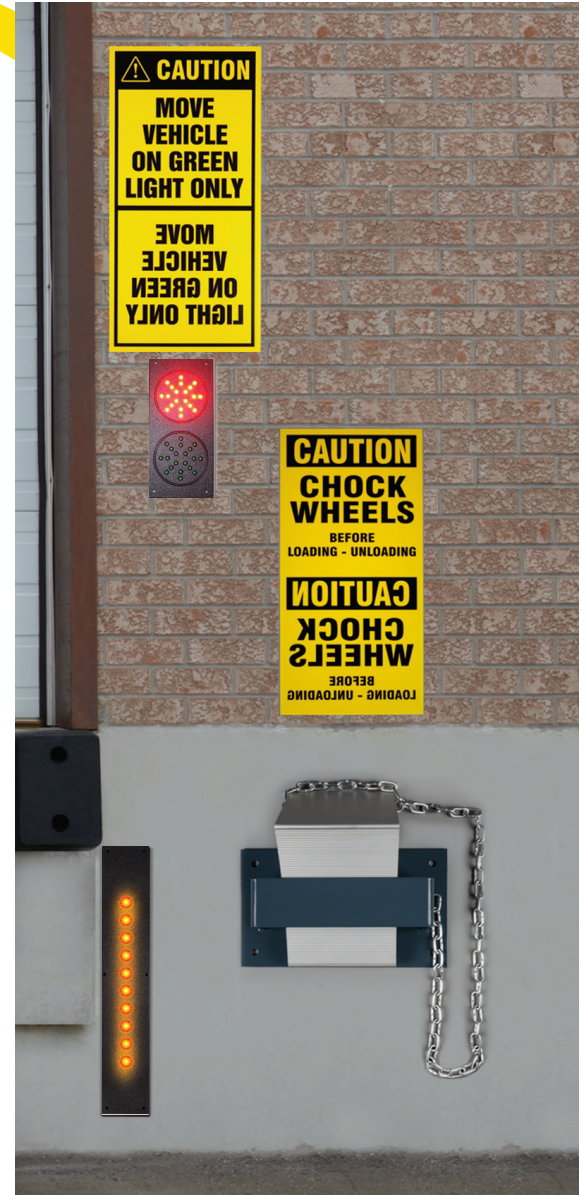
SC-8 ALUMINUM CHOCK

Features

- "Claw" like bottom assures dependable grip on any ground surface conditions
- Lightweight and reliable
- Chock fits snugly under tire contour for maximum holding power
- Often preferred for snow and ice conditions
- Extruded aluminum

Size: 7" w x 11-1/2" long x 8" high

Weight: 6lbs



SC-8 ALUMINUM CHOCK

Industry's Most Reliable All Weather Wheel Chock

- Strong
- Light
- Dependable

WHEELCHOCK SAFETY SYSTEM

PREVENT TRAILER CREEP & PREMATURE DEPARTURE

Custom contour design fits snugly against the truck tires to prevent the unintentional forward movement of a stationary trailer.

ECONOMICAL PROTECTION

Inexpensive form of security which helps protect loading dock personnel.

SIMPLE OPERATION

Once trailer has docked, the driver or dock attendant removes the wheel chock from the sturdy wall bracket and wedges it manually in front of the rear tire. Once loading operations are complete, the chock is removed and stored.

VISIBLE INSTRUCTIONS

Safety Yellow Caution Sign alerts drivers to use wheel chocks. Printed in both standard and mirror image (allowing driver to see the sign in his/her mirror as they back up), ensures clear visibility.

LOSS PREVENTION

The wheel chock safety system comes with 1/4" heavy duty Zinc Plated chain solidly attached to the chock which is anchored securely to the dock wall or easily welded to the heavy duty wall bracket.

MEETS REGULATIONS

OSHA. regulation 1910.178 (k)(1) the brakes of highway trucks shall be set and wheel chocks placed under the rear wheels to prevent the trucks from rolling while they are boarded with powered industrial trucks.



IC-10 ICE CHOCK

Features:

- "Tooth" like bottom assures reliable grip on icy/slippery ground surfaces
- Lightweight and dependable
- Maximum holding power for snow and ice
- Powder coated safety yellow for high visibility

Material: Formed Steel

Size: 8" wide x 10-1/2" long x 9-1/4" high

Weight: 9lbs



CBI-29 CAST IRON CHOCK

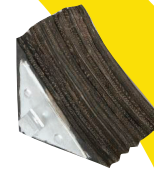
Features:

- Cast ductile iron for impressive strength
- Painted blue for good visibility
- Completely reversible for simple use

Size: 8" wide x 12" long x 9" high

Material: Cast Ductile Iron

Weight: 28lbs



88-8 LAMINATED CHOCK

Features:

- Recycled rubber laminates compressed and fastened under high pressure
- Galvanized steel sides

Size: 8" w x 8" long x 8" high

Material: Recycled Fabric Reinforced Rubber Laminates

Weight: 14lbs

Also Available as 88-8XL

Size: 11-1/4" wide x 14" long x 14" high

Weight: 50lbs



CMH-94 RUBBER CHOCK

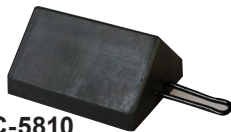
Features:

- One piece solid rubber
- Integral handle

Material: 80 Durometer Rubber

Size: 7-6" wide x 9-1" long x 7-1" high

Weight: 13lbs



WC-5810 RUBBER CHOCK

Features:

- Solid rubber is most durable
- Hook for chain fastening

Material: 80 Durometer Rubber

Size: 8" wide x 10" long x 5" high

Weight: 12lbs



CBI-087 CAST IRON CHOCK

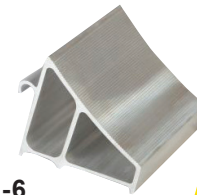
Features:

- Cast ductile iron for high strength
- Painted yellow for high visibility

Material: Cast Ductile Iron

Size: 8-1/2" wide x 7-1/4" long x 8-1/2" high

Weight: 14lbs



SC-6 ALUMINUM CHOCK

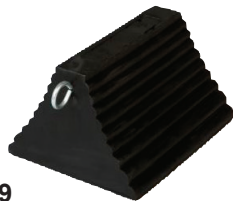
Features:

- Lightweight
- Excellent surface grip on tire & ground

Material: Aluminum

Size: 6" wide x 6.8" long x 6" high

Weight: 3.5lbs



68-9 PYRAMID CHOCK

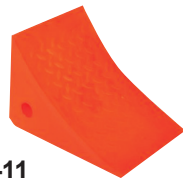
Features:

- Economical construction
- Handles for chain fastening

Material: 80 Durometer Rubber

Size: 8" wide x 9" long x 6" high

Weight: 9lbs



811-11 URETHANE CHOCK

Features:

- High visibility

Material: Orange Urethane

NOT RECOMMENDED ON ICE

Size: 11" wide x 8" long x 7" high

Weight: 3.2lbs



MWC-32 CHOCK

Features:

- Good stability over others in this class

Material: 80 Durometer Rubber

Size: 6-H" wide x 9-H" long x 8-H" high

high

Weight: 13lbs



CC-07 CENTURY-CHOCK

Features:

- Reversible chock design
- One-piece cast construction

Material: Cast Aluminum Alloy

Size: 10" base x 6-G" wide x 9" high

Weight: 7.5lbs